

Using touch to access a Windows 7 PC

Touch is a very powerful way of interacting directly with information and data that appears on a computer screen.

Touch systems are divided into two categories; those that need a pen or stylus to work and those that will work with a fingertip.

PC's with touchscreen and Tablet PC's both have touch functions that are accessed through the **Control Panel**.

If you have a PC with a touch sensitive screen you can use that screen with **Windows 7**.

Open '**Control Panel**' + '**All Control Panel Items**' + '**Pen and Touch**'.

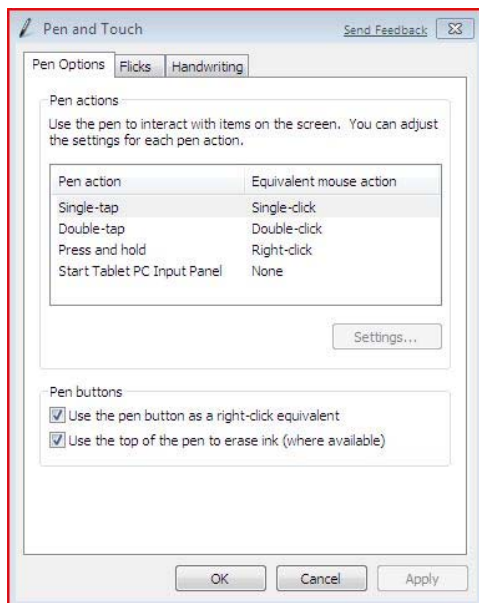


Fig 1

Selecting the '**Pen Options**' tab allows you to choose what mouse actions can be replicated with pen or touch options.

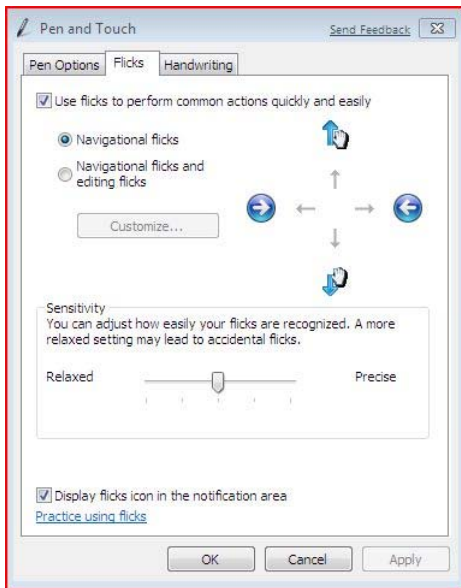


Fig 2

By selecting '**Flicks**' you can set up the computer to respond to pen or touch movements to move objects and files around the screen.

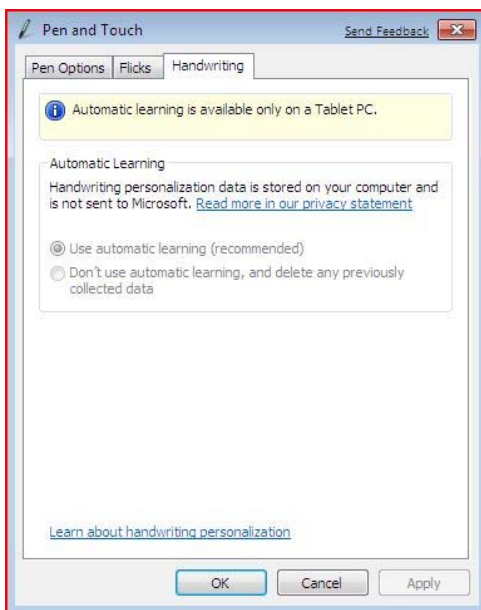


Fig 3

Selecting '**Handwriting**' sets up the computer to recognise your handwriting and translate it into text.

Note: If this does not work it could be because your computer settings cannot be changed due to local IT policies - contact your local IT support for further help.