

Slowing down you mouse's double click speed in Windows 7

Ease of Access Center has replaced **Accessibility Options** in the **'Control Panel'**.

Open **Ease of Access Center** press **'Windows'** logo key + **'U'** or click Start button **'Control Panel'** + **'Ease of Access'** + **'Ease of Access Center'**.

Select **'Make the mouse easier to use'** and then **'Mouse settings'** under **see also**.

This will open the **'Mouse Properties'** window.

You can also reach the **'Mouse Properties'** window via **'Control Panel'** + **'All Control Panel Items'** + **'Mouse'**.

To change the speed at which you double click the mouse button, press **'Alt'** + **'D'** and using the arrow keys or click on the pointer, move it to make the setting slower or faster. You can test your setting by double clicking on the folder icon.

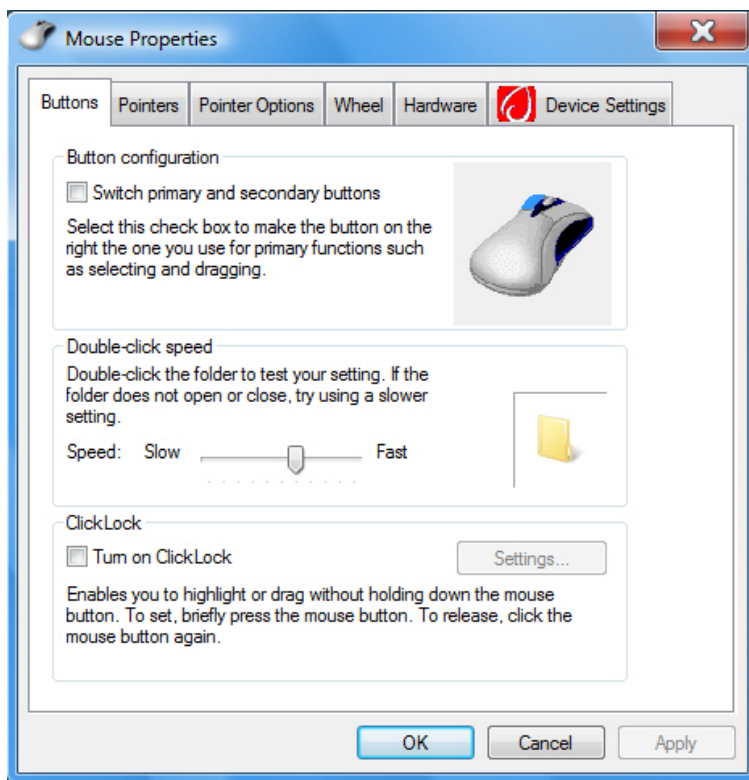


Fig 1

Note: If this does not work it could be because your computer settings cannot be changed due to local IT policies - contact your local IT support for further help.