

Making your mouse left handed in Windows 7

Ease of Access Center has replaced **Accessibility Options** in the **'Control Panel'**.

Open **Ease of Access Center** press **'Windows'** logo key + **'U'** or click Start button **'Control Panel'** + **'Ease of Access'** + **'Ease of Access Center'**.

Select **'Make the mouse easier to use'** and then **'Mouse settings'** under **see also**.

This will open the **'Mouse Properties'** window.

You can also reach the **'Mouse Properties'** window via **'Control Panel'** + **'All Control Panel Items'** + **'Mouse'**.

Under the **Buttons** tab you can alter the Button Configuration this will allow you to swop over the buttons from the default left click to a right click for selection and dragging. Click to select **'Switch primary and secondary buttons'** or **'Alt' + 'S'**, see Fig 1.

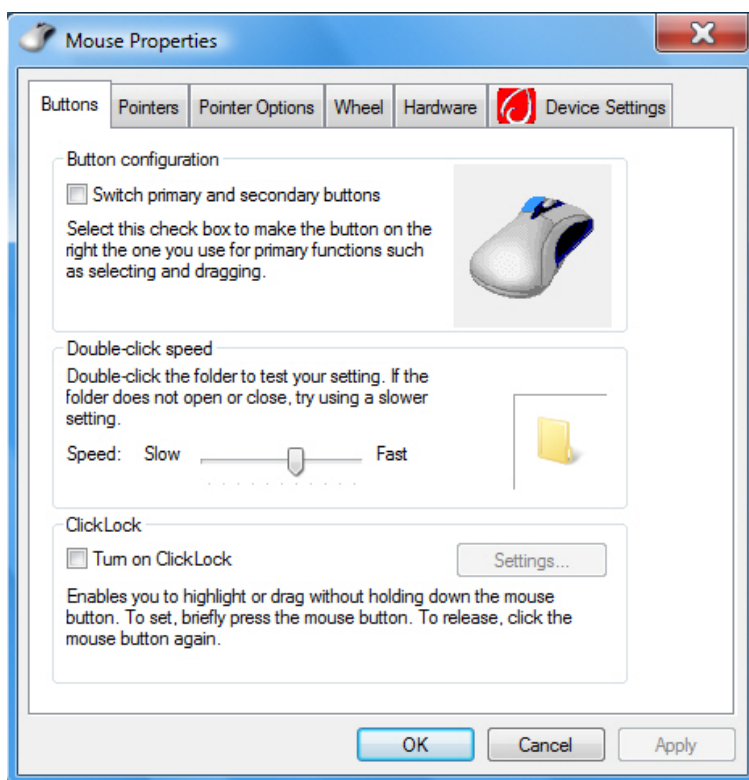


Fig 1

Note: If this does not work it could be because your computer settings cannot be changed due to local IT policies - contact your local IT support for further help.