



Please help support this charitable service by donating £3. Text [Ability](tel:08458) to 84858

Windows Magnifier

Windows includes a magnification utility which can help some people more easily read text on the screen.

The Windows Magnifier enables text to be increased to a very large size. It is, however, restricted to a small portion of the screen and hence most vision impaired people would find that they require fully-functional magnification software.

This skillsheet shows you how to activate the Windows Magnifier.

This skillsheet is for Windows XP. Similar features are available in other versions of Windows. Please see our website at www.abilitynet.org.uk/myway or consult the Help facility in your version of Windows.

To Open the Windows Magnifier

- Click the **Start** button or alternatively you can press the **Windows logo key** on your keyboard (located between the **Ctrl** and **Alt** keys) or **Ctrl + Esc**.
- Click on **Programs** or alternatively press **P** on the keyboard until **Programs** is highlighted and then **Enter**.
- Click on **Accessories** or press **A** on the keyboard until **Accessories** is highlighted and then press **Enter**.
- Click on **Accessibility** or if you are using the keyboard, it will already be highlighted so just press **Enter**.
- Click on **Magnifier** or press **M** and when **Magnifier** is highlighted, press **Enter** on the keyboard.
- The magnifier is now turned on and the **settings box** appears (see Fig. 1).
- You can use the mouse to click in the **Magnification Level box** to change the level of magnification, or use the **up and down arrow keys**.
- You can minimise the **Magnifier Settings box** by clicking the **minimize** button or by pressing **Alt + Space** and then press **N**.

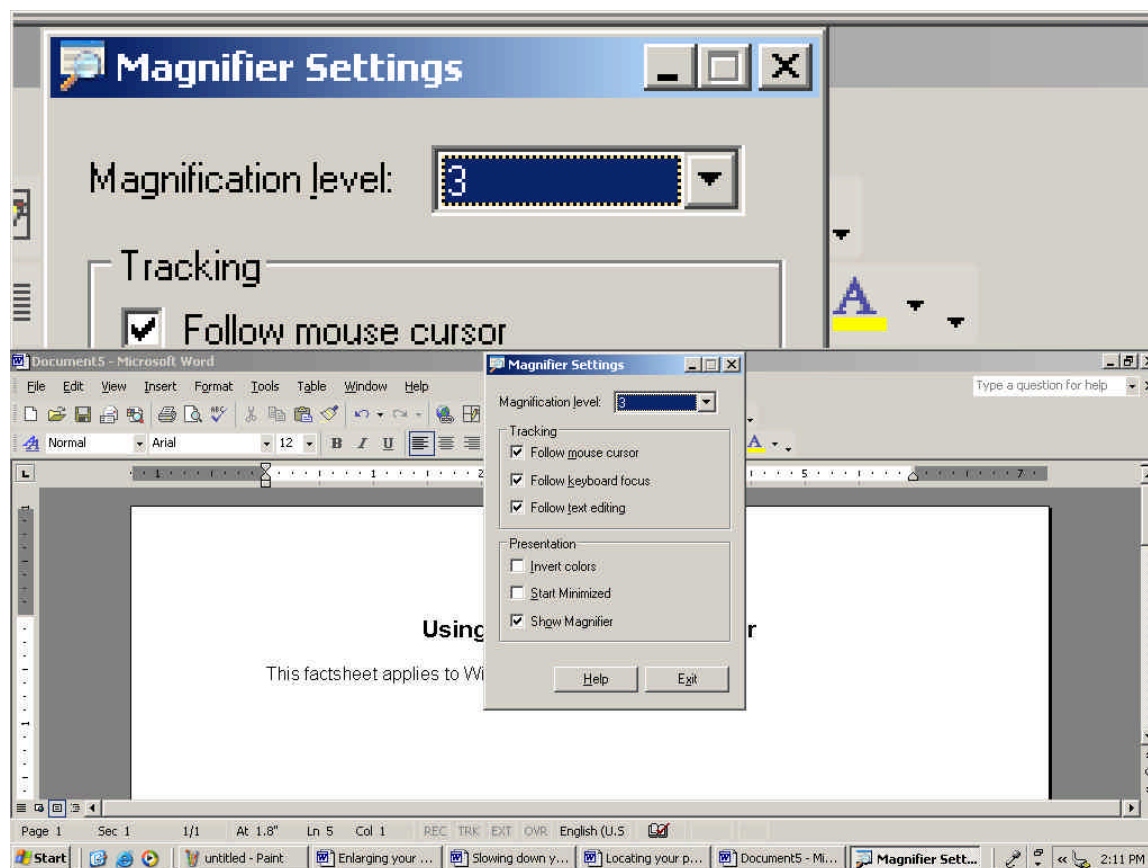


Fig .1

Messages charged at standard rate. You will receive two confirmation messages charged at £1.50 each. AbilityNet will receive your donation net of charges applied by mobile network operators and a processing fee. If you have any questions regarding this service, please call 020 7549 2222.