



Please help support this charitable service by donating £3\* Text [Ability](tel:08458) to 84858

## Making text easier to see in KDE 4

### Changing your screen resolution

1. Click on the 'K' icon on the menu tab, or press 'Alt' + 'F1' to open 'KickOff', Fig 1.



Fig 1

2. Click to select or use the arrow keys to go to 'Computer' + 'System Settings' then press 'Enter', Fig 2.



Please help support this charitable service by donating £3\* Text [Ability](tel:0845454545) to 84858

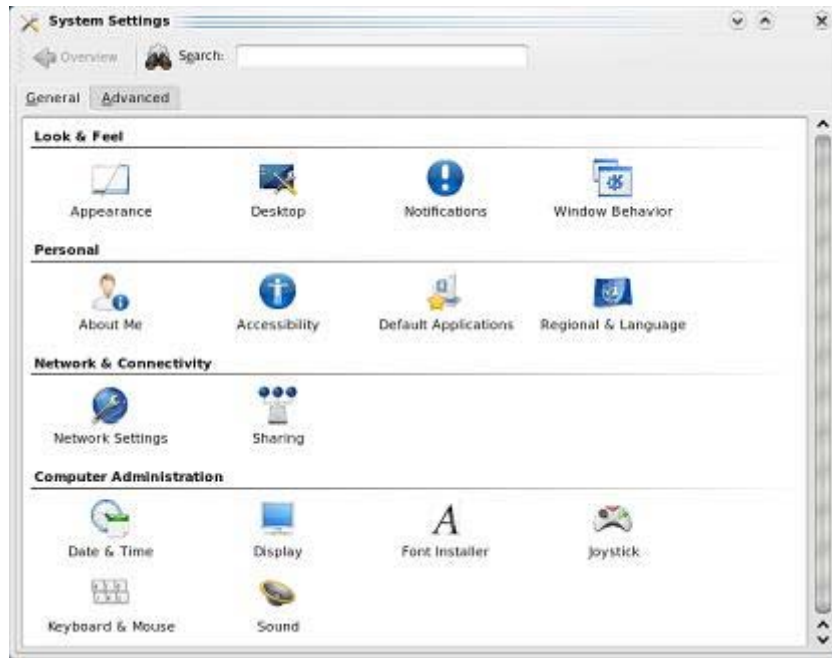


Fig 2

3. Click to select or 'Tab' to enter the main window, and use the arrow keys to navigate to 'Display', then press 'Enter', Fig 3.

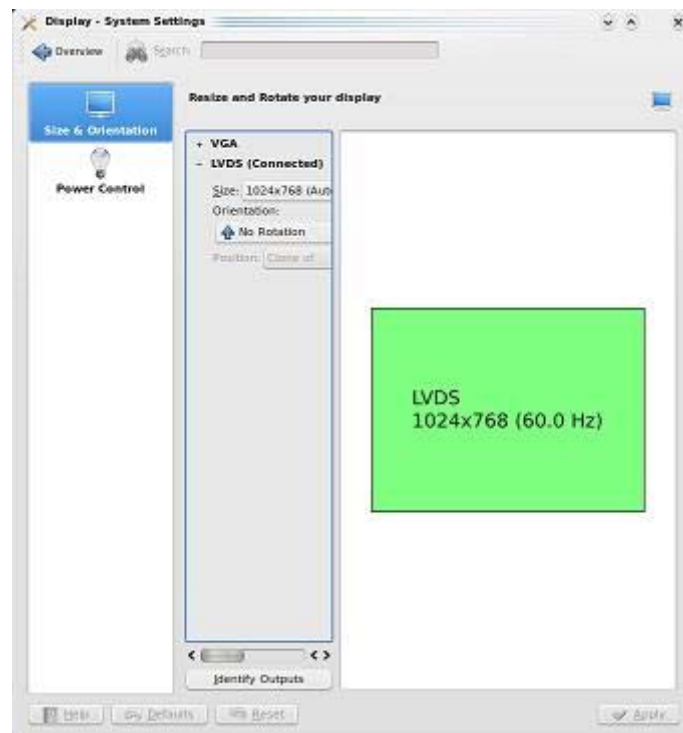


Fig 3

4. Click on the dropdown next to **Size** or press 'Tab' to highlight the **Resize and Rotate** box, then use the up or down arrows to adjust the resolution.



Please help support this charitable service by donating £3\* Text [Ability to 84858](tel:0800269545)

5. Click the '**Apply**' button or press '**Alt**' + '**A**'.
6. The screen resolution will change and you will be asked if you want to keep the new resolution or use the previous one, to use the new one click on '**Accept configuration**' or press '**Alt**' + '**A**'.
7. To change back to the previous one, click on the '**Revert to previous configuration**' or press '**Alt**' + '**R**'.
8. Click on the '**Overview**' button or press '**Esc**' to return to the previous screen, then click the '**Close**' cross or press '**Alt**' + '**F4**' to return to the KDE desktop.

## Using large fonts

9. Click on the '**K**' icon on the menu tab, or press '**Alt**' + '**F1**' to open '**KickOff**', Fig 1 above.
10. Click to select or use the arrow keys to go to '**Computer**' + '**System Settings**' then press '**Enter**', Fig 2 above.
11. Click to select or '**Tab**' to enter the main window, and use the arrow keys to navigate to '**Appearance**', press '**Enter**'.
12. Click to select or press '**Tab**' to enter the main window, and use the arrow keys to navigate to '**Fonts**', Fig 4.



Please help support this charitable service by donating £3\* Text [Ability](tel:08458) to 84858

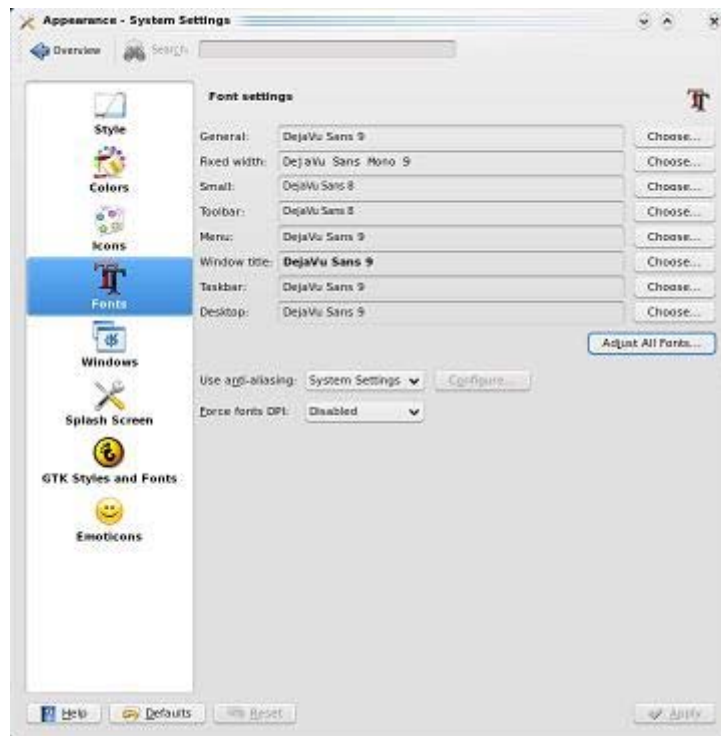


Fig 4

13. Click '**Adjust all fonts**' or press '**Alt**' + '**J**'. Click the '**Size**' tick box to enable it or press '**Alt**' + '**S**', then either click a font size or use the down arrow to enter the font size box, then use the up and down arrow keys to select a font size.
14. Click '**OK**' or press '**Alt**' + '**O**' to accept the font size.
15. Click '**Apply**' or press '**Alt**' + '**A**' to apply your new settings.
16. Click on the '**Overview**' button or press '**Esc**' to return to the previous screen, then click the '**Close**' cross or press '**Alt**' + '**F4**' to return to the KDE desktop.