



Please help support this charitable service by donating £3\* Text [Ability](tel:0800269545) to 84858

## Changing your fonts in KDE 4

1. Click on the 'K' icon on the menu tab, or press 'Alt' + 'F1' to open 'KickOff', Fig 1.



Fig 1

2. Click to select or use the arrow keys to go to 'Computer' + 'System Settings', then press 'Enter', Fig 2

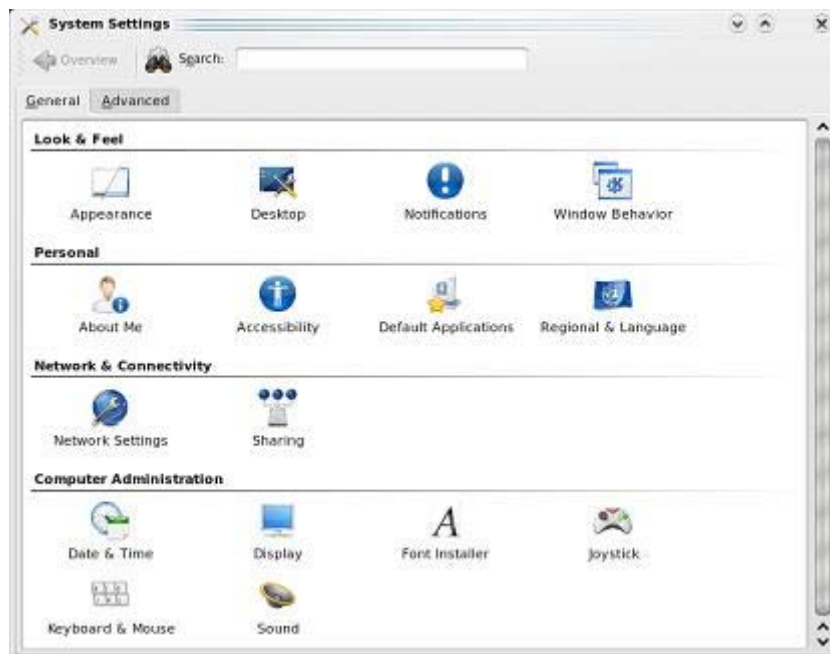


Fig 2



Please help support this charitable service by donating £3\* Text [Ability](tel:08458) to 84858

3. Click to select or press 'Tab' to enter the main window, and use the arrow keys to navigate to 'Appearance', then press 'Enter', Fig 3.

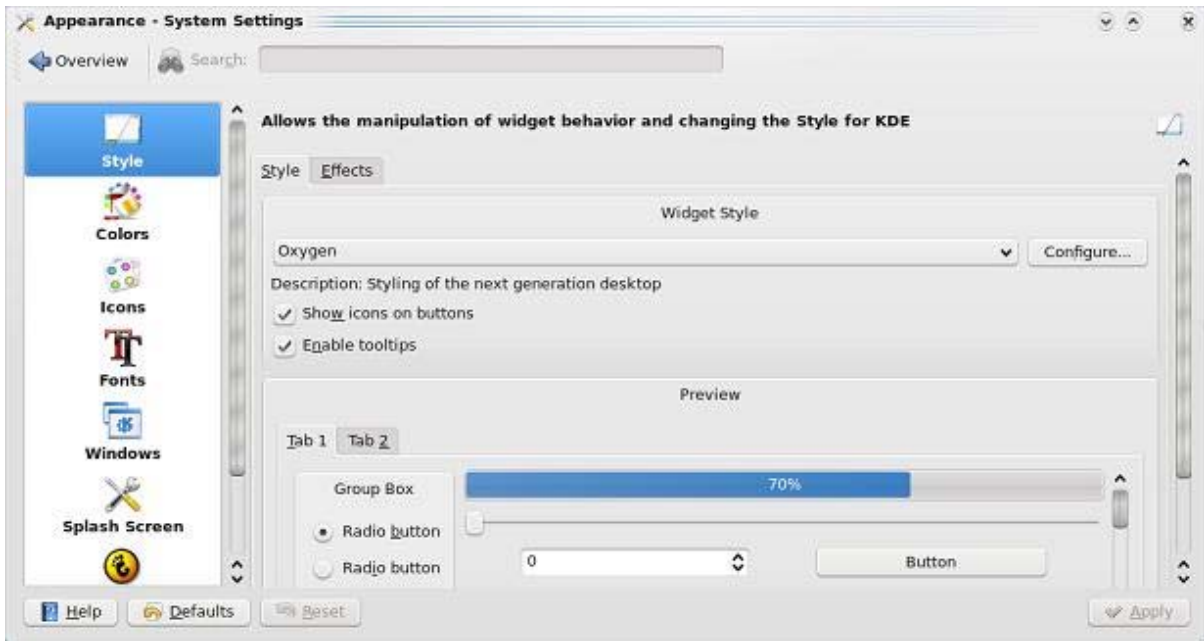


Fig 3

4. Click to select or press 'Tab' until the left hand window has the focus highlight, then use the down arrow to select 'Fonts', Fig 4.

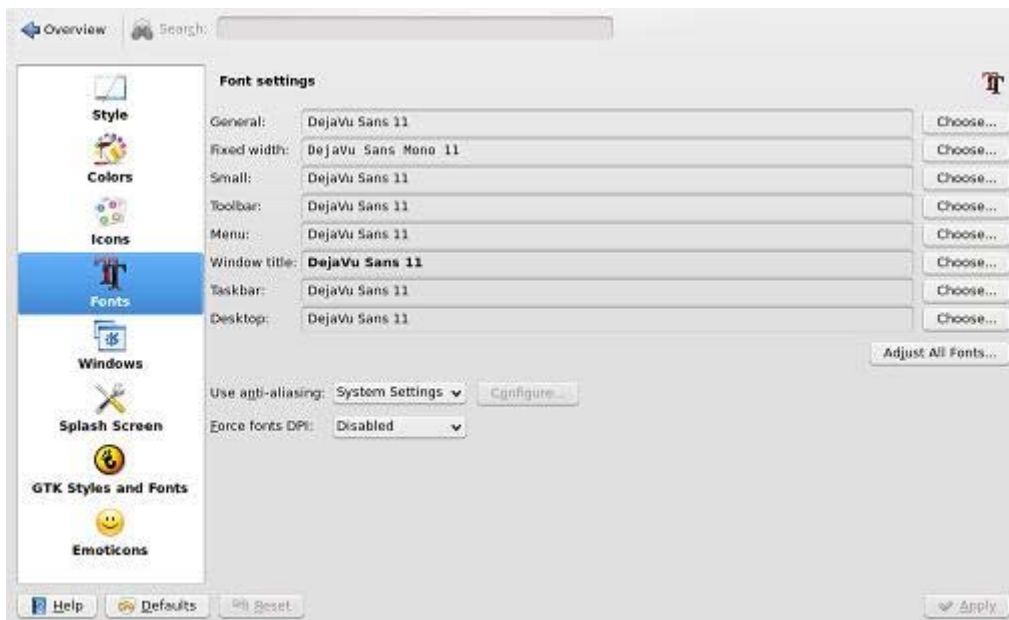


Fig 4



Please help support this charitable service by donating £3\* Text [Ability](tel:0845454545) to 84858

5. Click on the '**Adjust All Fonts...**' button or press '**Alt**' + '**J**' to bring up the '**Select Font – System Settings**' window as shown in Fig 5.

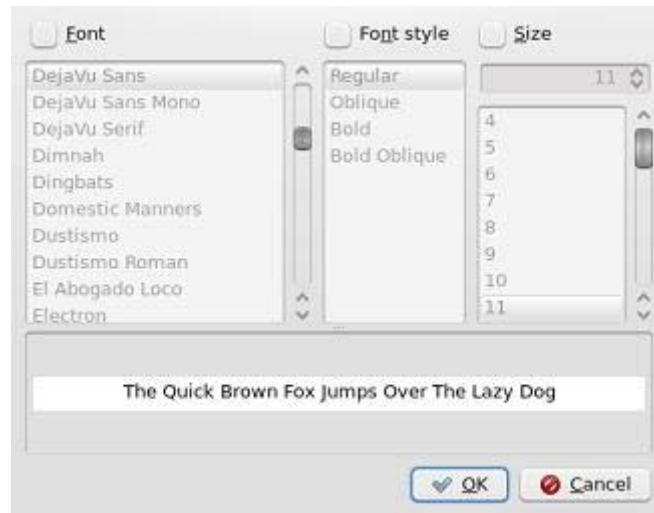


Fig 5

6. Click on the checkbox next to '**Font**' or press '**Alt**' + '**F**'.
7. Click on the font you want from the list under '**Font**' or press '**Tab**' until the list below '**Font**' is highlighted and then use the '**up**' and '**down**' arrows to select.
8. Click on the font size you want from the list under '**Size**' or press '**Alt**' + '**S**' then select the font size you want or press '**Tab**' until the list below '**Size**' is highlighted, then use the '**up**' and '**down**' arrows to select.
9. Click '**OK**' or press '**Alt**' + '**O**' to close.
10. When you have selected your required fonts, click on '**Apply**' or press '**Alt**' + '**A**', then click the '**Overview**' button or press '**Esc**' to return to '**System Settings**', then click the '**Close**' cross or press '**Alt**' + '**F4**' to return to the **KDE** desktop.