



Please help support this charitable service by donating £3\* Text [Ability](tel:0800269545) to 84858

## Changing Colours in Gnome version 2.2

You can change the Gnome desktop in the '**Appearance**' preferences menu, which has a number of different colour schemes to choose from such as '**High Contrast**' and '**Large Print**'. To change your theme:



Fig 1

1. Click on or press '**Alt**' + '**F1**' to open the '**System**' menu, Fig 1. Use the arrow keys to navigate to '**System**'. Click on '**Preferences**' or use the arrow keys and either click or use the arrow keys to select '**Appearance**' to open the '**Appearance Preferences**' dialog, Fig 2.

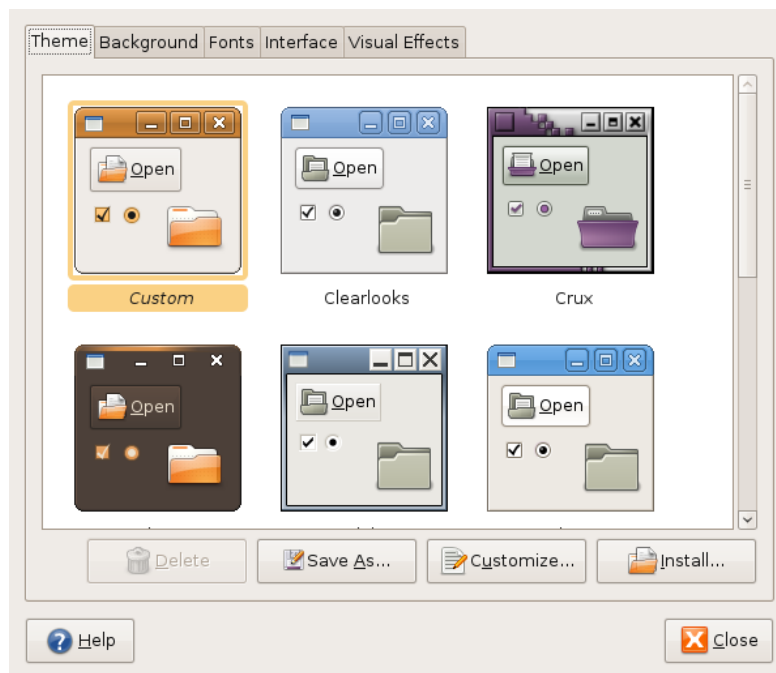


Fig 2



Please help support this charitable service by donating £3\* Text [Ability](tel:08458) to 84858

- The different themes can be selected by either clicking or by using **'Tab'** to move to the themes and using the arrow keys to select an option.
- When an option is selected, the desktop will reflect this immediately. Click **'Close'** or press **'Alt' + 'C'** to close the dialog, or if you wish to customise the selected theme, click **'Customize'** or press **'Alt' + 'C'**, to open the **'Customize Theme'** dialog, see Fig 3.

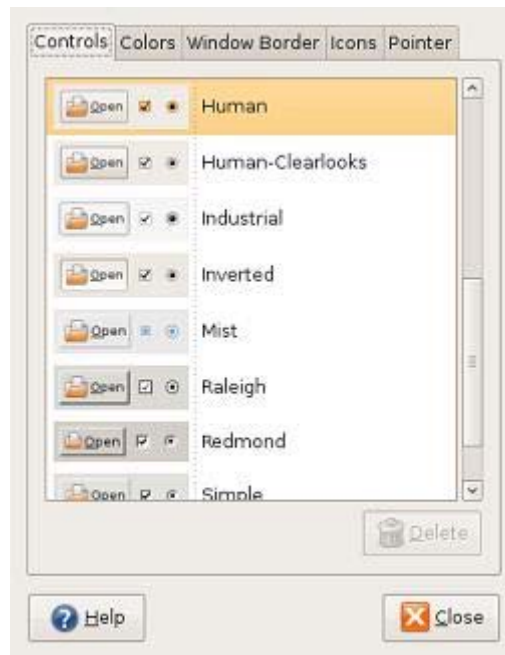


Fig 3

- Click on the various tabs or use the arrow keys to select, then click the relevant option or press **'Tab'** to enter the options area, then use the arrow keys to make the selection. When complete, click **'Close'** or press **'Alt' + 'C'** to close the dialog and return to the **'Appearance Preferences'** dialog.
- There are further colour themes available from the internet, which can be downloaded and installed when saved to disk by clicking the **'Install'** button or press **'Alt' + 'I'**.